



MHP

OUTDOOR GRILLS

America's first and best built gas grill for 50 years



1964
AMK



1960
Perfect Host



1967
CC1



1970
HEJ



1990
WNK



Today
WNK4



An American Made Grill

Grill Heads – Standard Models

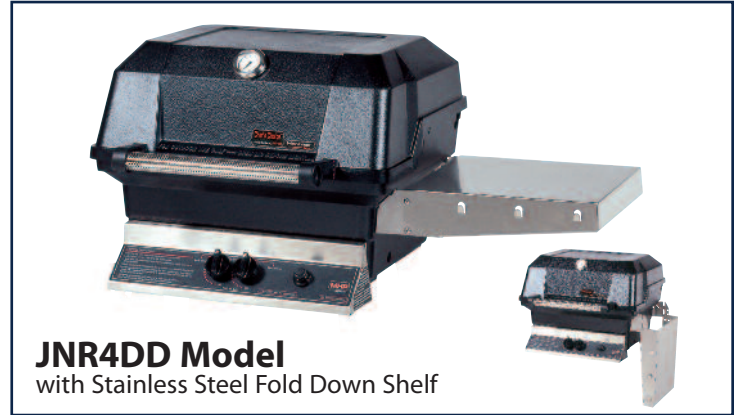


Heavier Grade Construction for "Made In The USA" Quality. MHP Outdoor Grills are built of the finest grade weather-resistant materials...permanent mold cast aluminum housing (not die-cast) ensures thicker walls for years of endurance, sustains higher temperatures and retains more heat for unmatched cooking performance. Stainless steel and high-temp powder-paint finish provides lasting beauty and durability.

GRILL HEADS – JNR MODELS



JNR4 Model
with NuStone Shelf



JNR4DD Model
with Stainless Steel Fold Down Shelf

495 square inches of total cooking area • 30,000 BTU rated per-hour input
1/4" stainless steel cooking grid • Stainless steel warming rack

GRILL HEADS – WNK MODELS



WNK4 Model
with NuStone Shelves



WNK4DD Model
with Stainless Steel Fold Down Shelves

642 square inches of total cooking area • 40,000 BTU rated per-hour input
5/16" 2-piece stainless steel cooking grid • Stainless steel swing-away warming rack
High profile lid to handle all rotisserie functions, accomodating large cuts of meats and big Tom turkeys

GRILL HEAD – TJK2 MODELS



TJK2 Model
Stainless Steel Fold Down Shelves are Standard

- 642 square inches of total cooking area
- 40,000 BTU rated per-hour input
- 5/16" 2-piece stainless steel cooking grid
- Stainless steel swing-away warming rack
- High profile stainless steel lid with solid aluminum end-caps for greater stability

All models can be upgraded to the State-Of-The-Art SearMagic® cooking system

Grill Heads – Infrared and Hybrid Models



WRG4DD and WHRG4DD Models



TRG2 and THRG2 Models

Serious Intense Heat for Great Grilling

Standard Equipment

Stainless Steel Fold Down Shelves
Patented SearMagic® Cooking Grids and Warming Rack
Electronic Ignition Lights Individual Burners

Advantages of Infrared

- **Fast...**heats up in approximately 3 minutes
- Intense heat—**seals in meat juices** for better flavor
- **Time saver...**heats up faster with shorter grilling time
- High intense heat **reduces flare-ups** by vaporizing juices instantly

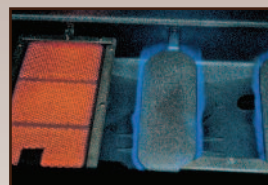


3 Infrared Burners

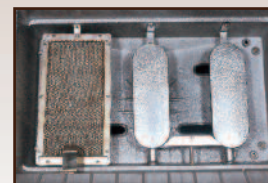


2 In 1 Hybrid Grills for Greater Cooking Versatility

Infrared burner for time saving grilling and 2 cast stainless steel burners for traditional grilling



Infrared Burner plus 2 Cast Stainless Steel Burners creates 3 different cooking zones for the ultimate in flexibility.



Infrared Burner and 2 Cast Stainless Steel Burners. 5-year warranty on Infrared and Lifetime warranty on the Cast Stainless Steel Burners.



Burner technology, porcelain briquettes, precision heat control and component positioning combine to give MHP Grills uniform heat distribution and unmatched cooking performance for better tasting foods.



**Limited Lifetime Warranty
(against rust-through) on the following:**

**Top Casting
Bottom Casting
Control Panel
Side Shelf Brackets
Bottom Shelf Frame
Tank Ring
Cast Legs
Stainless Steel Fasteners
In-Ground & Patio Base Post
Stainless Steel Column
Stainless Steel Shelves
Stainless Steel Burners
Venturi Tubes
Stainless Steel & SearMagic® Cooking Grids
Stainless Steel & SearMagic® Warming Racks**

5-Year Warranty on the following:

**Infrared Burners
Porcelain Briquettes**

1-Year Warranty on the following:

All other components including:

**Ignitor System
Gas Valves
NuStone Side Shelves
NuStone Patio Base
Knobs
Rock Grates**

The MHP Outdoor Grill



When we invented the original outdoor gas grill, we had no idea how popular cooking out with gas would become. In the five decades since then, we have led the industry in developing new features to improve grills. Encompassing the sum of innovative MHP technology over the years the MHP Grill

line embodies the solid, dependable gas grills from which all our lines are built. The MHP Grill line provides a wide range of features, sizes and options to offer a grill for every family size and budget.



First Outdoor Gas Grill 1960

In 1960, we invented the product that has changed the way the world cooks-out.

Modern Home Products Corporation was founded in the mid 1950's by Walter Koziol. In the beginning the company created decorative outdoor gas lighting for residential applications. As the gas lighting business expanded, Walter explored ways in which to utilize gas in other outdoor products.

The first outdoor gas grill was introduced to the consumer in 1960. The round design grill was 22-1/2" in diameter with a hood that was a standard design for charcoal grills of the period. The brand name was "Perfect Host."

Continuing to improve on early models, Walter engineered the first rectangular cast aluminum grill with a hinged lid. It remains the industry's most popular design to this day. Modern Home Products Corporation continues that standard of quality and construction in our current product offering.

Constant improvement has led to creating SearMagic® cooking grids and warming racks, a patented "H" style stainless steel burner, no-rust exterior construction and Sta-Kool Stainless Steel handle just to name a few.

When Walter invented the first outdoor gas grill in 1960, a legacy of grills was born.



First Cast Aluminum Gas Grill 1964

Unique Features for the Absolute Finest Quality and Unmatched Cooking Performance



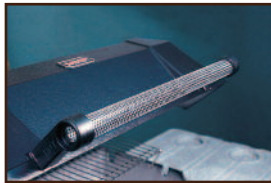
Electronic Ignition

With a specially designed stainless steel collector box, gas and air are combined to provide faster starts from either side of burner. Battery included.

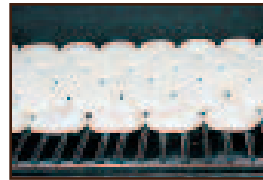


Fold Down Shelf(s)

Freestanding JNR4DD, WNK4DD, TJK2, WRG, WHRG, TRG and THRG models feature stainless steel fold down side shelf(s) with convenient built-in tool holders. Side shelf(s) fold down to conserve space while in use or storage and lifts securely into place when extra work space is needed. The JNR4DD includes 1 shelf, all other models include 2 shelves.



Thicker, solid cast aluminum housing with an exclusive Kozy Coat™ high-temp powder-paint finish for lasting beauty and durability. Sta-Kool stainless steel handle that rolls when you open the hood.



Exclusive self-cleaning Flavor Master™ long lasting porcelain briquettes provide food with a cleaner, fresher and better barbecue flavor. Unlike metal flavor plates/bars, the Flavor Master briquettes will not rust. Heavy Duty Rock Grate with a fused-on rust resistant porcelain finish for longer life.



Large, easy to clean Nu-Stone® side shelf(s) or Stainless Steel Fold Down Shelf(s) with built-in utensil holders. Extremely durable and FDA approved. The JNR models include 1 shelf, all other models include 2 shelves.



- 5/16" heavy-weight 2-piece stainless steel rod cooking grids are extremely durable, easy to clean and are standard on WNK4 and TJK2 Series.
- JNR4 Series standard cooking grids are made of 1/4" stainless steel rods.
- Exclusive SearMagic® Premium grids are available as an upgrade to all models.



Exclusive patented "H" type stainless steel dual burner for longer life. Burner gas ports are uniform in size and shape, providing uniform flame on each port. Entire venturi is made of stainless steel and has a built-in Spider Guard.



Exclusive Built-in Shish Kabob Skewer holders.

Options for JNR4, WNK4 and TJK2 Series



Smooth Side

Ribbed Side

High Performance, Rust-Free Anodized Aluminum Cooking Grids

This unique cooking grid heats up faster and cooks all foods at a uniform temperature. Use the wide-ribbed side for grilling steaks, chops, burgers and ribs, branding them with sear lines. Use the flip side, with its smooth surface for grilling delicate foods such as fish, seafood and vegetables.



Standard on:
WRG4, TRG2, WHRG4
and THRG2



Secondary Cooking Surface

More than a typical warming rack. This elevated surface cooks at lower temperatures for added flexibility!

- JNR4-PS Series** LP Gas
- JNR4-NS Series** Nat. Gas
- WNK4-PS Series** LP Gas
- WNK4-NS Series** Nat. Gas
- TJK2-PS Series** LP Gas
- TJK2-NS Series** Nat. Gas



Add the optional side burner and Infra-roast® rotisserie burner and you're really cooking!



Stainless Steel Side Burner

The premium commercial grade stainless steel side burner is 12,000 BTU rated, has its own electronic ignition, and is factory assembled for simple drop-in installation.

- SBA2-N**
(Nat. Gas - WNK4, JNR4, TJK2, WRG4, TRG2, WHRG4 & THRG2 Series)
- SBA2-P**
(LP Gas - WNK4, JNR4, TJK2, WRG4, TRG2, WHRG4 & THRG2 Series)



Infra-Roast® Rotisserie Burner System

Infrared rear burner heats up fast sealing juices in for more moist results. Constructed of commercial grade 304 stainless steel. Easy to install or remove for normal grilling, 12,000 BTU rated, has its own control. Burner is removeable when not in use.

Infra-Roast® Rotisserie Burner System not available on JNR Models

- GRRB2-N** (Nat. Gas - WNK4)
- GRRB2-P** (LP Gas - WNK4)

- GRRBD-N** (Nat. Gas - WNK4DD, TJK2, WRG4, TRG2, WHRG4 & THRG2)
- GRRBD-P** (LP Gas - WNK4DD, TJK2, WRG4, TRG2, WHRG4 & THRG2)

Mounting Options For Greater Flexibility



MPP In-Ground Post

48" no-rust anodized aluminum in-ground post with stainless steel grease cup for grill head. 4" dia. post fits all models. For Natural or LP gas installation.



MPB Deck/Patio Base

Anodized aluminum post and NuStone deck/patio base with stainless steel gas feed tubing and grease cup for grill head. 4" dia. post fits all models. For Natural or LP gas installation.



JCP4 and WCP4 Portable Cart

Duro Cast aluminum cart with heavy-duty legs, 8" rubber wheels for strength and easy portability. Includes tank ring and stainless steel grease cup for grill head. JCP4 fits JNR; WCP4 fits WNK,TJK, WRG, WHRG, TRG and THRG propane gas series.



JCN4 and WCN4 Portable Cart

Duro Cast aluminum cart with heavy-duty legs, 8" rubber wheels for strength and easy portability. Includes 12 ft. hose with quick disconnect coupler and stainless steel grease cup for grill head. JCN4 fits JNR; WCN4 fits WNK, TJK, WRG, WHRG, TRG and THRG natural gas series.



OCOL-B Column- Aluminum

One-piece black powder paint aluminum column includes stainless steel access door, stainless steel grease cup for grill head and conceals propane tank. Fits all models and bases.



OCOL Column- Stainless Steel

One-piece 304 stainless steel column includes stainless steel access door, grease cup for grill head and conceals propane tank. Fits all models and bases.

OPN and OPP Deck/Patio Base

Black powder painted cast aluminum deck/patio base with 28" stainless steel gas feed tubing. Fits OCOLB or OCOL columns.



OCN (Natural Gas) 2-Wheel Portable Base OCP (Propane Gas) 2-Wheel Portable Base (While Supplies Last)

Black powder painted cast aluminum portable base with 6" rubber wheels. Fits OCOLB or OCOL column. OCN Model has 12 ft. hose with quick disconnect coupler.



OMN (Natural Gas) 2-Wheel/2 Caster Portable Base OMP (Propane Gas) 2-Wheel/2 Caster Portable Base

Black powder painted cast aluminum portable base with 8" rubber wheels and locking casters. Fits OCOLB or OCOL column. OMN Model has 12 ft. hose with quick disconnect coupler.

All mounting options are available with all grill heads. See page 10 for grills and mounting combinations at a glance.

Grilling Techniques

More Versatile Than Your Kitchen Oven... It's Easy and Foods Taste Better

Direct

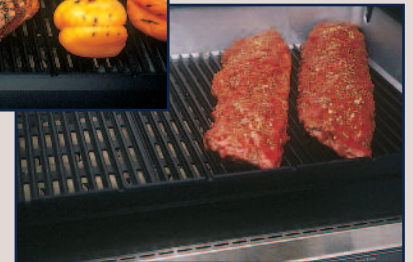
For grilling/searing steaks, chops, burgers, sausages, fish fillets, chicken parts or shish kabobs. Your MHP Gas Grill is designed to cook with the lid closed. Close lid to finish grilling and to retain natural juices and moisture. Use high heat for quick searing and more of a char flavor.



Direct

Indirect (using one side of burner)

For roasts, ribs, ham, whole chicken, turkey, game or whole fish. Using the indirect heat method, turn on one side of burner, then place food on the side that's not lit.



Indirect

Indirect (with water pan)

Fill an aluminum pan with water or other ingredients, (such as wine, juices, herbs, spices, etc.). Center the pan on briquettes to moderate the temperature and to add moisture and flavor. The cooking juices from the food drop into the water pan. A savory water vapor is created and absorbed into the food.

Pan Roasting

To cook large cuts of meat, pot roast, turkey, whole chickens or ham in natural juices or seasoning. Place aluminum roasting pan on top of cooking grid. For extra flavor, add your favorite vegetables, wine or juices, garlic and onions to the drip pan. Use the liquid to baste or as a gravy.



Indirect



Pan Roasting

Smoke (addition of wood chips or chunks)

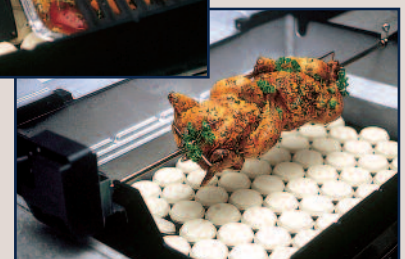
Ordinary meat, whole fish, poultry and game becomes a taste sensation when smoked. Using the water pan technique and your favorite wood soaked in water for several hours. Place chips in convenient MHP reusable smoke box directly on briquettes alongside of water pan.

Rotisserie (Accessory)

Poultry, lamb, beef and pork retain their flavor when spit-roasted. Meat is rotated over the heat keeping it constantly bathed in its own juices, ensuring that all sides become done at one time. A drip pan can be used to collect the drippings for basting or gravy.

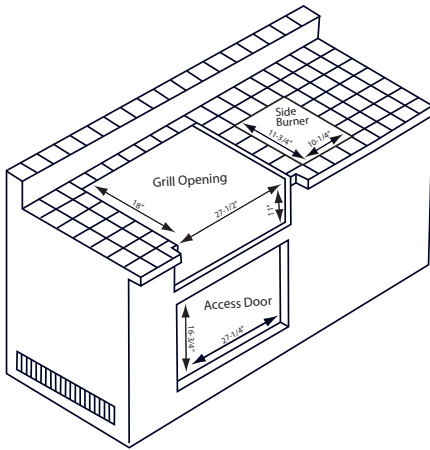


Smoke



Rotisserie

Built-In Grills (TJK, WNK, WRG, TRG, WHRG & THRG Models)



Items needed for building-in grill heads:

NMS-GS Commercial-grade stainless steel grill head insert, faceplate. Insert is sized to encompass the grill head for a neater and more of a finished look to the built-in installation. Fits WNK4 and TJK2 grill heads.

NMS2-GS Same as NMS-GS, sized to fit WRG4, TRG2, WHRG4 and THRG2 grill heads.

NMS-DS Commercial-grade stainless steel doors with hidden hinges for the finishing touch to a built-in installation. Fits WNK4 and TJK2 grill heads.

Built-in Grill Upgrades

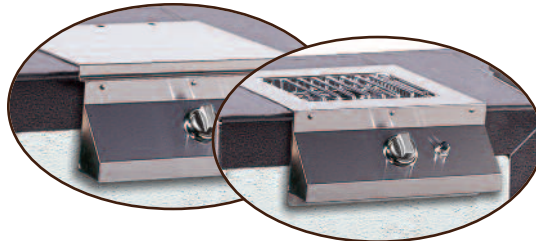


Stainless Steel Side Burner

The premium commercial grade stainless steel side burner is 12,000 BTU rated, has its own electronic ignition, and is factory assembled for simple drop-in installation.

Built-in Side Burner

SBB12-N (Natural Gas)
SBB12-P (Propane Gas)



Premium Hi-Power Side Burner

The MHP Hi-Power side burner easily accommodates a large sauté pan or pot and provides high heat for wok cooking or deep frying.

- All stainless steel construction
- 18,000 BTU per-hour input
- Stainless steel burner
- Heavy-duty 5/16" stainless steel rod support grid
- Electronic ignition system
- Stainless steel cover
- Available in Natural or Propane gas
- Opening required - 13-1/8" wide x 16" deep x 7-1/2" high

SBB1L-N (Natural Gas) **SBB1L-P** (Propane Gas)



Infra-Roast® Rear Rotisserie Burner System

Infra-red rear burner heats up fast to quickly put a seal around meats for juicier and moister results. Constructed of commercial grade stainless steel and is easy to install or remove for normal grilling. 16,000 BTU rated and has its own control.

GGBIRRB-N (Natural Gas-WNK4 & TJK2)

GGBIRRB-P (Propane Gas-WNK4 & TJK2)

RRBI36-N (Natural Gas-GJK3)

RRBI36-P (Propane Gas-GJK3)

Built-in Enclosures, Grill Heads and Upgrades

Model	Description	Fits Series	Opening Required
NMS-GS	Stainless steel faceplate and grill sleeve	WNK4, TJK2	27-1/2" wide x 18" deep x 11" high
NMS2-GS	Stainless steel faceplate and grill sleeve	WRG4, TRG2, WHRG4, THRG2	27-1/2" wide x 18" deep x 11" high
NMS-DS	Stainless steel access doors only	WNK4, TJK2, WRG4, TRG2, WHRG4, THRG2	27-1/4" wide x 16-3/4" high
SBB2-N	Drop-in natural gas stainless steel side burner	WNK4, TJK2, WRG4, TRG2, WHRG4, THRG2	10-1/4" wide x 11-3/4" deep
SBB2-P	Drop-in propane gas stainless steel side burner	WNK4, TJK2, WRG4, TRG2, WHRG4, THRG2	10-1/4" wide x 11-3/4" deep
SBB1L-N	Premium natural gas side burner built-ins	GJK3, WNK4, TJK2, WRG4, WHRG4, TRG2, THRG2	13-1/8" wide x 16" deep x 7-1/2" high
SBB1L-P	Premium propane gas side burner built-ins	GJK3, WNK4, TJK2, WRG4, WHRG4, TRG2, THRG2	13-1/8" wide x 16" deep x 7-1/2" high
GGBIRRB-N	Natural gas Infra-Roast rear burner (Built-in Models)	WNK4, TJK2, WRG4, TRG2, WHRG4, THRG2	
GGBIRRB-P	Propane gas Infra-Roast rear burner (Built-in Models)	WNK4, TJK2, WRG4, TRG2, WHRG4, THRG2	

Premium Accessories For Outdoor Entertainment Centers

DRAWERS



Double Drawer



Triple Drawer

Part No.	Cut-Outs (in inches)	Description
NMS-DDS	14-1/2" w x 14-1/2" h	Double Drawer (Overall Dimension 17" w x 17" h)
NMS-TDS	14-1/2" w x 25-1/2" h	Triple Drawer (Overall Dimension 17" w x 28" h)

DOORS



Small Double Doors



Large Double Doors



Large Vertical Single Door



Small Vertical Single Door

Small Horizontal Single Door



Part No.	Cut-Outs (in inches)	Description
NMS-DS	27-1/4" w x 16-1/4" h	Small Double Doors (Double Lined) (Overall Dimension 29" w x 18" h)
NMSDS-LG	32-1/4" w x 16-1/4" h	Large Double Doors (Double Lined) (Overall Dimension 36" w x 20" h)
NMSDS-SSDV	14-1/4" w x 20-1/4" h	Small Vertical Single Door (Overall Dimension 18" w x 24" h)
NMSDS-SSDH	20-1/4" w x 14-1/4" h	Small Horizontal Single Door (Overall Dimension 24" w x 18" h)
NMSDS-LSD	14-1/2" w x 25-1/2" h	Large Vertical Single Door (Overall Dimension 17" w x 28" h)

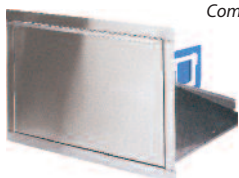
COMBO UNITS



Combo Drawer & Door



Pull-Out Trash Compartment



Pull-Out Cooler Drawer

Part No.	Cut-Outs (in inches)	Description
NMS-DDC	14-1/2" w x 25-1/2" h	Combo Drawer and Door Combination (Overall Dimension 17" w x 28" h)
NMS-TP	14-1/2" w x 25-1/2" h	Pull-Out Trash Compartment (Overall Dimension 17" w x 28" h)
NMS-CP	27-1/2" w x 17-1/2" h	Pull-Out Cooler Drawer (Overall Dimension 30" w x 20" h)

USA MADE

Constructed of Heavy-Duty Commercial Grade Stainless Steel

JNR



JNR4N-MPP Nat. Gas
JNR4P-MPP LP Gas
JNR4DDN-MPP Nat. Gas
JNR4DDP-MPP LP Gas



JNR4N-MPB Nat. Gas
JNR4P-MPB LP Gas
JNR4DDN-MPB Nat. Gas
JNR4DDP-MPB LP Gas



JNR4N-OCOLB/OPN Nat. Gas
JNR4P-OCOLB/OPP LP Gas
JNR4DDN-OCOLB/OPN Nat. Gas
JNR4DDP-OCOLB/OPP LP Gas



JNR4N-OCOL/OPN Nat. Gas
JNR4P-OCOL/OPP LP Gas
JNR4DDN-OCOL/OPN Nat. Gas
JNR4DDP-OCOL/OPP LP Gas



JNR4N-OCOLB/OCN Nat. Gas
JNR4P-OCOLB/OCN LP Gas
JNR4DDN-OCOLB/OCN Nat. Gas
JNR4DDP-OCOLB/OCN LP Gas



JNR4N-OCOL/OCN Nat. Gas
JNR4P-OCOL/OCN LP Gas
JNR4DDN-OCOL/OCN Nat. Gas
JNR4DDP-OCOL/OCN LP Gas

JNR



JNR4N-OCOLB/OMN Nat. Gas
JNR4P-OCOLB/OMP LP Gas
JNR4DDN-OCOLB/OMN Nat. Gas
JNR4DDP-OCOLB/OMP LP Gas



JNR4N-OCOL/OMN Nat. Gas
JNR4P-OCOL/OMP LP Gas
JNR4DDN-OCOL/OMN Nat. Gas
JNR4DDP-OCOL/OMP LP Gas



JNR4N-JCN4 Nat. Gas
JNR4DDN-JCN4 Nat. Gas



JNR4P-JCP4 LP Gas
JNR4DDP-JCP4 LP Gas



WNK

WNK4, WNK4DDN, WRG4DDNS & WHRG4DDNS-MPP Nat. Gas
WNK4, WNK4DDP, WRG4DDPS & WHRG4DDPS-MPP LP Gas

WNK



WNK4N, WNK4DDN, WRG4DDNS
& WHRG4DDNS-MPB Nat. Gas
WNK4P, WNK4DDP, WRG4DDPS
& WHRG4DDPS-MPB LP Gas



WNK4N, WNK4DDN, WRG4DDNS
& WHRG4DDNS-OCOLB/OPN Nat. Gas
WNK4P, WNK4DDP, WRG4DDPS
& WHRG4DDPS-OCOLB/OPP LP Gas



WNK4N, WNK4DDN, WRG4DDNS
& WHRG4DDNS-OCOL/OPN Nat. Gas
WNK4P, WNK4DDP, WRG4DDPS
& WHRG4DDPS-OCOL/OPP LP Gas



WNK4N, WNK4DDN, WRG4DDNS
& WHRG4DDNS-WCN4 Nat. Gas



WNK4P, WNK4DDP, WRG4DDPS
& WHRG4DDPS-WCP4 LP Gas

WNK



WNK4N, WNK4DDN, WRG4DDNS
& WHRG4DDNS-OCOLB/OCN Nat. Gas
WNK4P, WNK4DDP, WRG4DDPS
& WHRG4DDPS-OCOLB/OCN LP Gas



WNK4N, WNK4DDN, WRG4DDNS
& WHRG4DDNS-OCOL/OCN Nat. Gas
WNK4P, WNK4DDP, WRG4DDPS
& WHRG4DDPS-OCOL/OCN LP Gas



WNK4N, WNK4DDN, WRG4DDNS
& WHRG4DDNS-OCOLB/OMN Nat. Gas
WNK4P, WNK4DDP, WRG4DDPS
& WHRG4DDPS-OCOLB/OMN LP Gas



WNK4N, WNK4DDN, WRG4DDNS
& WHRG4DDNS-OCOL/OMN Nat. Gas
WNK4P, WNK4DDP, WRG4DDPS
& WHRG4DDPS-OCOL/OMN LP Gas



WNK4N-NMS Nat. Gas
WRG4NS & WHRGNS-NMS2 Nat. Gas

TJK



TJK2N, TRG2NS
& THRG2NS
MPP Nat. Gas



TJK2N, TRG2NS
& THRG2NS
MPB Nat. Gas



TJK2N, TRG2NS
& THRG2NS
WCN4 Nat. Gas



TJK2P, TRG2PS
& THRG2PS
WCN4 LP Gas



TJK2N, TRG2NS
& THRG2NS
OCOL/OPN Nat. Gas



TJK2P, TRG2PS
& THRG2PS
OCOL/OPP LP Gas

TJK



TJK2N, TRG2NS
& THRG2NS
OCOL/OCN Nat. Gas



TJK2N, TRG2NS
& THRG2NS
OCOLB/OCN Nat. Gas



TJK2N, TRG2NS
& THRG2NS
OCOL/OMN Nat. Gas



TJK2P, TRG2PS
& THRG2PS
OCOL/OPP LP Gas



TJK2N-NMS Nat. Gas
TRG2NS & THRG2NS
NMS2 Nat. Gas

TO CONSERVE SPACE NOT ALL FOLD DOWN SHELF MODELS ARE SHOWN.

Mounting Options

Part No.	Description	Fits Grill Heads	Gas Type	
			Nat.	LP
MPP	48 inch aluminum post for in-ground installation, complete with stainless steel tubing and stainless steel grease cup	JNR4, WNK4, TJK2, WRG4 TRG2, WHRG4 & THRG2	•	•
MPB	Aluminum post with Nustone Deck/Patio base, stainless steel tubing and stainless steel grease cup	JNR4, WNK4, TJK2, WRG4 TRG2, WHRG4 & THRG2	•	•
JCN4	Cast aluminum cart legs and anodized aluminum shelf, 8" rubber wheels, stainless steel grease cup and 12 foot hose with brass quick disconnect	JNR4	•	
JCP4	Cast aluminum cart legs with 8" rubber wheels, stainless steel grease cup and anodized aluminum shelf and tank holder	JNR4		•
WCN4	Cast aluminum cart legs with anodized shelf, 8" rubber wheels, stainless steel grease cup and 12 foot hose with brass quick disconnect	WNK4, TJK2, WRG4, TRG2 WHRG4 & THRG2	•	
WCP4	Cast aluminum cart legs with anodized shelf, tank holder, 8" rubber wheels and stainless steel grease cup and anodized aluminum tank holder	WNK4, TJK2, WRG4, TRG2 WHRG4 & THRG2		•
OPN	Solid cast aluminum deck/patio base with stainless steel tubing fits OCOLB & OCOL	JNR4, WNK4, TJK2, WRG4 TRG2, WHRG4 & THRG2	•	
OPP	Solid cast aluminum deck/patio base fits OCOLB & OCOL	JNR4, WNK4, TJK2, WRG4 TRG2, WHRG4 & THRG2		•
OCN	Solid cast aluminum portable base with 6" rubber wheels and 12 foot hose with brass quick disconnect fits OCOLB & OCOL	JNR4, WNK4, TJK2, WRG4 TRG2, WHRG4 & THRG2	•	
OCP	Solid cast aluminum portable base with 6" rubber wheels fits OCOLB & OCOL	JNR4, WNK4, TJK2, WRG4 TRG2, WHRG4 & THRG2		•
OMN	Solid cast aluminum portable base with 8" rubber wheels, commercial grade locking casters and 12 foot hose with brass quick disconnect fits OCOLB & OCOL	JNR4, WNK4, TJK2, WRG4 TRG2, WHRG4 & THRG2	•	
OMP	Solid cast aluminum portable base with 8" rubber wheels and commercial grade locking casters fits OCOLB & OCOL	JNR4, WNK4, TJK2, WRG4 TRG2, WHRG4 & THRG2		•
OCOLB	Aluminum column with black powder-paint finish, stainless steel access panel and stainless steel grease cup fits OPN, OPP, OCN, OCP, OMN & OMP	JNR4, WNK4, TJK2, WRG4 TRG2, WHRG4 & THRG2		
OCOL	Stainless steel column, access panel and grease cup fits OPN, OPP, OCN, OCP, OMN & OMP	JNR4, WNK4, TJK2, WRG4 TRG2, WHRG4 & THRG2		
NMS-GS	Stainless steel grill sleeve includes face panel	WNK4 & TJK2	•	•
NMS2-GS	Stainless steel masonry enclosure kit, includes face panel	WRG4, TRG2, WHRG4 & THRG2	•	•
NMS-DS	Stainless steel door set only for built-ins	WNK4, TJK2, WRG4, TRG2 WHRG4 & THRG2		

Eventually, every grill needs an overhaul. Fortunately, MHP has thought of that.



Modern Home Products Corp. manufactures replacement parts for all major brands and many more. Our replacement burners, grids, grates, flavor plates, etc. are engineered for optimum performance and durability. Over 50 years of manufacturing quality products has given us the expertise needed to build products that last.

We also manufacture a broad line of accessories for added grilling versatility, convenience and enjoyment. Successful chefs know the importance of the right utensils and equipment. Items like long handled spatulas, forks and tongs are essential for successful grilling. When you're cooking with a gas grill, specialized accessories make barbecuing easier, more convenient and enjoyable.

Modern Home Products Corporation

150 South Ram Road • Antioch, IL 60002

Phone: 888.647.4745 • 847.395.6556

Fax: 800.637.2918 • 847.395.9121

E-Mail: info@mhpgrills.com

Web Site: www.mhpgrills.com



www.newphoenixgrills.com



ProFire® Grills
Perfection by Design

www.profiregrills.com



Outdoor Lighting

This literature may not be copied, photocopied, reproduced, translated or published in any electronic or machine-readable form, in whole or in part, without prior written approval of Modern Home Products Corp.

©2008-2012 Modern Home Products, Corp. MHP configuration, Chef's Choice, BBQer's Choice, Sear Magic, Flavor Master, Duro-Cast, Kozy Coat are trademarks of Modern Home Products. Nu-Stone is a registered trademark of IDI, Inc. Specifications subject to change without notice. MHP Outdoor Grills are covered by U.S. Patent Nos. 5467691 D 326,207 and D359,877

Printed in the U.S.A.

10/11 #GSC-1M