

NAPOLEON

OUTDOOR PRODUCTS

GAS FIREPLACES | TORCHES | PATIOFLAME®





FROM OUR FAMILY TO YOURS

Outdoor living is a lifestyle. A lifestyle that brings you relaxation, well-being and priceless moments with family and friends. It's about surrounding your outdoor space with products that reflect your style and make you feel good.

With over 35 years in the hearth, gourmet grill and outdoor living industries we are able to offer you a wide range of products with some of the strongest warranties in the industry. The years of experience, care and quality results in the creation of products that possess a timeless and enduring style, worthy of a place in your home.

Our products are available for viewing at an authorized Napoleon® dealer nearest you or online at napoleonfireplaces.com and napoleongrills.com.



WARM & WELCOMING

GSS42 - Outdoor Gas Fireplace

- Stainless steel construction for maximum durability and weather resistance
- Installs anywhere outdoors, no need for a chimney or venting
- Available in natural gas (optional propane conversion kit available)
- Millivolt valve with built-in adjustable flame & heat control
- Piezo ignitor for easy starts
- Optional remote control
- 5 year limited warranty

Options & Accessories



Decorative Panels
Decorative Sandstone Brick



Andirons
Painted Black Finish
Standard with unit



Remote Control
F45 - On/Off



Model	BTU's (Input)		Dimensions			Glass Type	Log Set	Controls	Ignition
	Natural Gas	Propane	Height	Front Width	Depth				
GSS42	65,000	65,000	35 3/4"	46 5/8"	21 1/8"	Tempered	PHAZER®	Flame/Heat	Piezo





GSS42 shown with standard brushed stainless steel double doors and optional decorative sandstone brick panels

LIGHT MY FIRE

GSS36 - Outdoor Gas Fireplace

- Stainless steel construction for maximum durability and weather resistance
- Installs anywhere outdoors, no need for a chimney or venting
- Available in natural gas (optional propane conversion kit available)
- Millivolt valve with built-in adjustable flame heat control
- Stainless steel weather resistant cover comes standard
- Piezo ignitor for easy starts
- Optional remote control
- 5 year limited warranty

Options & Accessories



Louvers
Brushed stainless steel
upper and lower louvers
Standard with unit



Andirons
24 Karat gold plated &
painted black finishes



Remote Control
F45 - On/Off



Model	BTU's (Input)		Dimensions			Glass Type	Log Set	Controls	Ignition
	Natural Gas	Propane	Height	Front Width	Depth				
GSS36	40,000	40,000	33"	37 1/4"	13 1/4"	Mesh Screen	PHAZER®	Flame/Heat	Piezo



Consult your owner's manual for complete and up-to-date measurements and installation instructions for proper clearances to combustible materials.



GSS36 shown with brushed stainless steel upper & lower louvers and stainless steel mesh safety screen

SENSE OF STYLE

GSST8 - The Outdoor Torch™

- Stainless steel construction for maximum durability and weather resistance
- Ideal for versatile installations, new construction and renovation projects - no venting required
- Available as a natural gas or propane unit
- Comes standard with a stainless steel cabinet and frame/front
- Porcelain Reflective Radiant Panels echo the flames throughout the prism shaped firebox
- Fuel saving electronic ignition
- Built-in GFI breaker outlet for ease of installation
- Optional accent lights, mounted underneath and above the Torch™, add a unique glow to the surroundings
- Two on/off switches - one for burner and one for optional accent lights
- 5 year limited warranty

Options & Accessories



Fireplace Controls

Two on/off switches control the burner and the optional accent lights
Standard with unit



Accent Lights

Optional accent lights can be mounted underneath and above the Torch™



Model	BTU's (Input)		Dimensions			Glass Type	Controls	Ignition
	Natural Gas	Propane	Height	Front Width	Depth			
GSST8	6,000	6,000	49 11/16"	15"	7 9/16"	Tempered	On/Off & Accent Lights	Electronic



GSST8 shown with standard brushed stainless steel cabinet and frame/front

COZY MOOD LIGHTING

PTH31GTSS - Bellagio™ Patio Torch

- Up to a four foot natural flame with a 360° view
- Modern styling featuring a protective SAFEGUARD™ screen
- Push button ignition for easy lighting
- Easy access door for tank storage
- Available as a propane unit (natural gas conversion kit available)
- Ideal for residential and commercial applications
- Optional commercial side shelf and bar table (PTS31SS) - as many as three may be added
- 1 year limited warranty

Options & Accessories



Side Shelf and Bar Table



Heavy Duty Cover



Model	BTU's (Input)		Dimensions			Glass Type	Controls	Ignition
	Natural Gas	Propane	Height	Front Width	Depth			
PTH31GTSS	31,000	31,000	84"	21 1/2"	21 1/2"	Tempered	Flame/Heat	Electronic





RIBBON OF FIRE

GPFL48MHP - Linear Patioflame®

- All stainless steel burner construction for maximum outdoor durability and weather resistance
- Topaz CRYSTALINE™ ember bed comes standard
- Hammertone Pewter powder coated surround & brushed stainless steel cover comes standard
- Access controls by the convenient, piano hinged door
- Electronic ignition
- Safety valve turns gas off if flame goes out
- Comes as a propane unit (natural gas conversion kit included)
- Gas can be connected from underneath and through knock-outs in side wall
- Optional coloured glass media kits are available in Blue, Amber, Black, Red and Clear
- Optional River Rock media kits are available in grey or multi-coloured
- Approved for use on wooden decks, stone or brick patios and concrete
- 5 year limited warranty

Options & Accessories



Blue Amber Black Red Clear Topaz (standard)

Glass Media Kit

Topaz glass comes standard with unit



River Rock Media Kits

Available in grey or multi-coloured

Note: Brushed stainless steel cover fits flush over the burner and is designed for glass media only



Model	BTU's (Input)		Dimensions			Ember Bed	Controls	Ignition
	Natural Gas	Propane	Height	Length	Depth			
GPFL48MHP	60,000	60,000	11 7/8"	51 7/8"	17 7/8"	CRYSTALINE™	Flame/Heat	Electronic



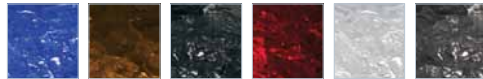


FLICKERING GLOW

GPF & GPFG - Patioflame®

- All stainless steel burner construction for maximum outdoor durability and weather resistance
- Realistic five piece patented GLOCAST™ log set (GPF)
- Topaz CRYSTALINE™ ember bed (GPFG)
- Optional coloured glass media kits are available in Blue, Amber, Black, Red and Clear (GPFG)
- Optional River Rock media kits are available in grey or multi-coloured
- Available as propane or natural gas units
- Approved for use on wooden decks, stone or brick patios and concrete
- 5 year limited warranty

Options & Accessories



Blue Amber Black Red Clear Topaz (standard)

Glass Media Kit

Topaz glass comes standard with unit (GPFG)



River Rock Media Kits

Available in grey or multi-coloured



Safety Screen



Cover



Table and Black Granite Top



Model	BTU's (Input)		Dimensions		Ember Bed	Controls
	Natural Gas	Propane	Height	Length		
GPF	60,000	60,000	18"	20" diameter	GLOCAST™	Flame/Heat
GPFG	60,000	60,000	4 3/4"	20" diameter	CRYSTALINE™	Flame/Heat





Other Napoleon® Products



Fireplace Inserts • Patioflame® • Gas Fireplaces • Waterfalls • Wood Stoves
Casual Furniture • Electric Fireplaces • Outdoor Fireplaces • Gourmet Gas Grills



- 24 Napoleon Road, Barrie, Ontario, Canada L4M 0G8
- 214 Bayview Drive, Barrie, Ontario, Canada L4N 4Y8
- 103 Miller Drive, Crittenden, Kentucky, USA 41030
- 7200 Trans Canada Highway, Montreal, Quebec, Canada H4T 1A3

Fireplaces call: 705.721.1212 • Grills call: 705.726.4278
napoleonfireplaces.com • napoleongrills.com



Authorized Dealer

Consult your owner's manual for complete installation instructions and proper clearances to combustible materials. Check all local and national building codes and gas regulations. All specifications are subject to change without prior notice due to on-going product improvements. Products may not be exactly as shown. Napoleon® is a registered trademark of Wolf Steel Ltd. © Wolf Steel Ltd.